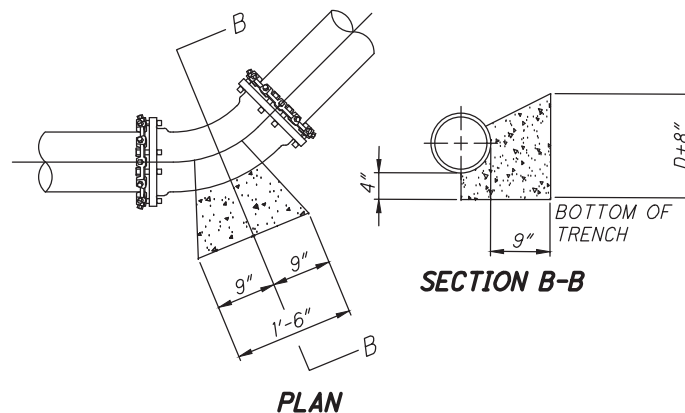
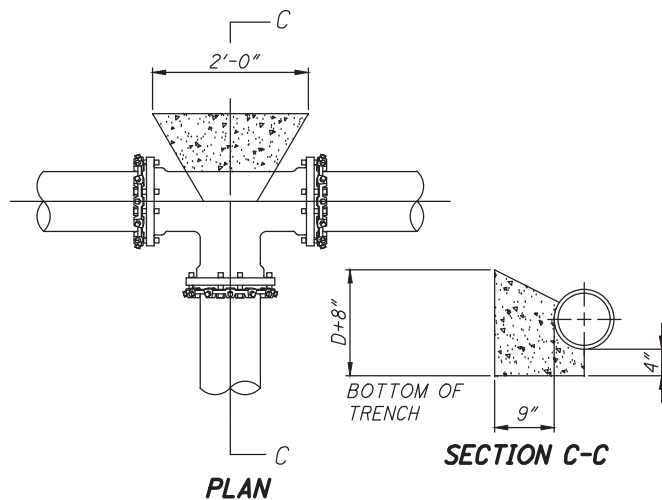


(22-1/2 DEGREE) BEND



(45 DEGREE) BEND



TEE AND TAPPING SLEEVES

NOTES:

1. ALL DIMENSIONS SHOWN HEREON ARE MINIMUM; THRUST BLOCK SHALL BE POURED TO UNDISTURBED EARTH.
2. ALL CONCRETE FOR THRUST BLOCKS SHALL BE CLASS "QC1" HAVING 4,000 PSI 28 DAY COMPRESSIVE STRENGTH.
3. DO NOT COVER BOLTS WITH CONCRETE ON MECHANICAL JOINTS.
4. USE FORMS WHEN POURING CONCRETE TO MAINTAIN SHAPE AND DIMENSIONS OF THRUST BLOCKS.
5. MEGA-LUGS ARE AN ACCEPTABLE OPTION.
6. MASONRY/CONCRETE BLOCKS MAY BE USED FOR WEDGING. WOOD SHALL NOT BE PERMITTED. BLOCKS SHALL BE 6"x8"x16" (MIN.) SOLID.
7. D = OUTSIDE PIPE DIAMETER.

CITY ENGINEER:
DATE 12/1/18
SCALE N/A
CITY OF NORTH RIDGEVILLE, OHIO
STANDARD CONSTRUCTION DRAWINGS

THRUST BLOCK DETAIL

DETAIL
WAT-7
PAGE
1 OF 1