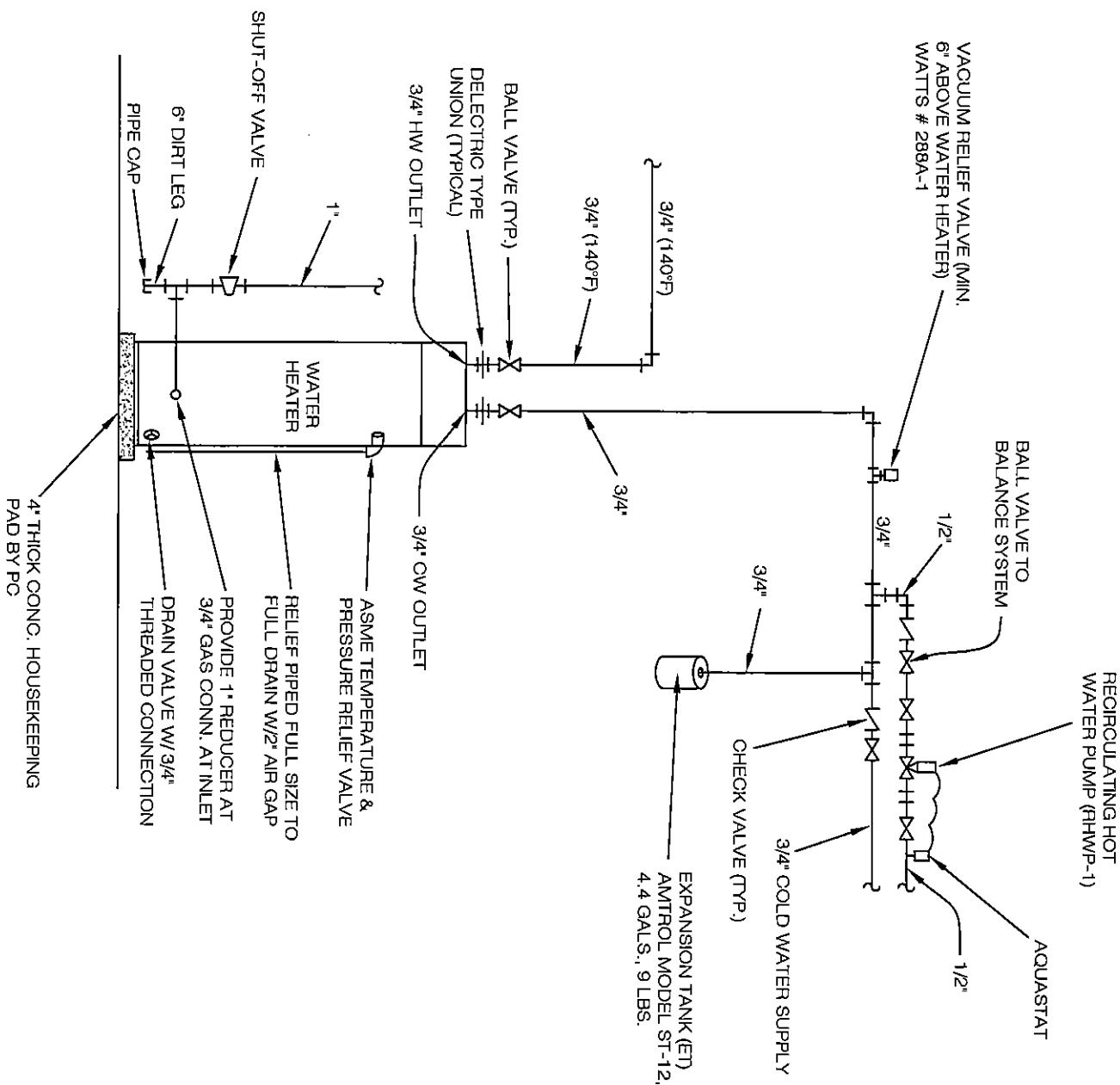


NOTE:
WHERE POSSIBLE DO NOT
INSTALL CURB BOX IN
PAVEMENT, SIDEWALKS,
DRIVEWAYS, APRONS.

1	3/69	Cover	
REV. No.	DATE	BY	DESCRIPTION
CITY OF NORTH RIDGEVILLE, OHIO DEPARTMENT OF ENGINEERING			

1" SERVICE CONNECTION

<i>James J. Platt</i>	
CITY OF NORTH RIDGEVILLE, ENGINEER	
SCALE: NOT TO SCALE	DATE: 10/01/08
DRAWN BY: JAB/TEB	WAT-13



RECIRCULATING HOT WATER (110 DEG) PUMP
(RHWP-1); SHALL BE B & G MODEL
"BRONZE FOX" MODEL NBF-18S IN-LINE, ALL
BRONZE. CAPACITY: 1 GPM @ 15' HD, 90
WATTS, .74 FLA, 115V, 1 PHASE, 3000 RPM

1			
REV. No.	DATE	BY	DESCRIPTION
CITY OF NORTH RIDGEVILLE, OHIO DEPARTMENT OF ENGINEERING			

GAS-FIRED HOT WATER
HEATER PIPING DIAGRAM

<i>James J. Platt</i>	
CITY OF NORTH RIDGEVILLE, ENGINEER	
SCALE: NOT TO SCALE	DATE: 10/01/08
DRAWN BY: JAB/TEB	WAT-14