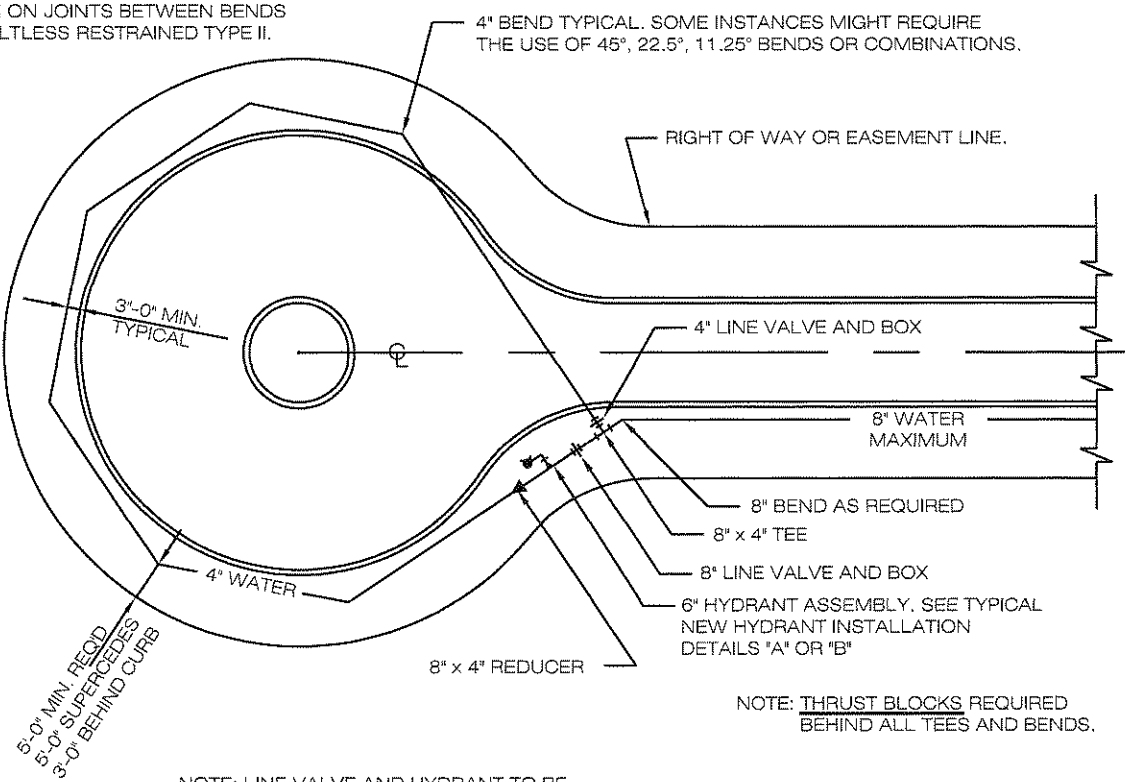


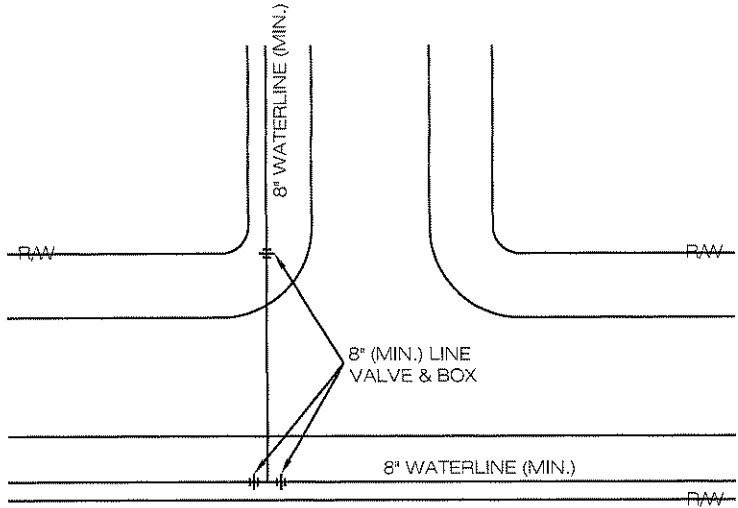
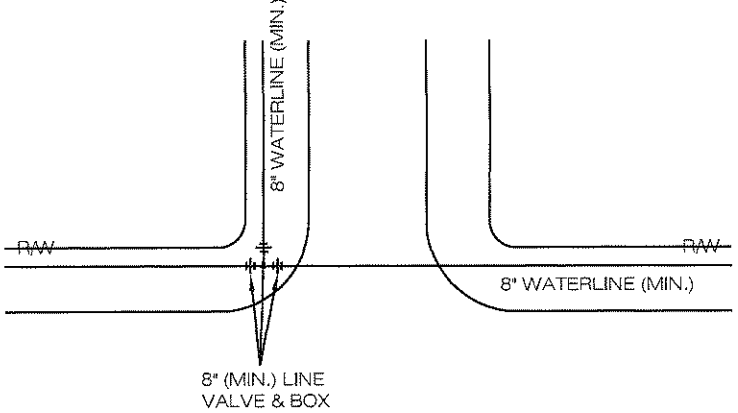
ALL PUSH ON JOINTS BETWEEN BENDS TO BE BOLTLESS RESTRAINED TYPE II.



NOTE: LINE VALVE AND HYDRANT TO BE AS CLOSE TO TEE AS POSSIBLE. HYDRANT TEE TO BE WITHIN 18'-0" OF 8" x 4" TEE. IF 18'-0" LENGTH IS EXCEEDED, USE ALTERNATE CUL-DE-SAC SCHEMATIC.

Larry Luffich
CITY OF NORTH RIDGEVILLE, ENGINEER

REV No.	DATE	BY	DESCRIPTION
CITY OF NORTH RIDGEVILLE, OHIO DEPARTMENT OF ENGINEERING			
STANDARD CUL-DE-SAC HYDRANT/LOOP SCHEMATIC			
SCALE: NOT TO SCALE			WAT-11
DATE: 10/01/08	DRWN BY: JAB/TEB		



Larry Luffich
CITY OF NORTH RIDGEVILLE, ENGINEER

REV No.	DATE	BY	DESCRIPTION
CITY OF NORTH RIDGEVILLE, OHIO DEPARTMENT OF ENGINEERING			
SHUTOFF VALVE LOCATIONS AT "T" INTERSECTIONS			
SCALE: NOT TO SCALE			WAT-12
DATE: 10/01/08 DRWN BY: JAB/TEB			