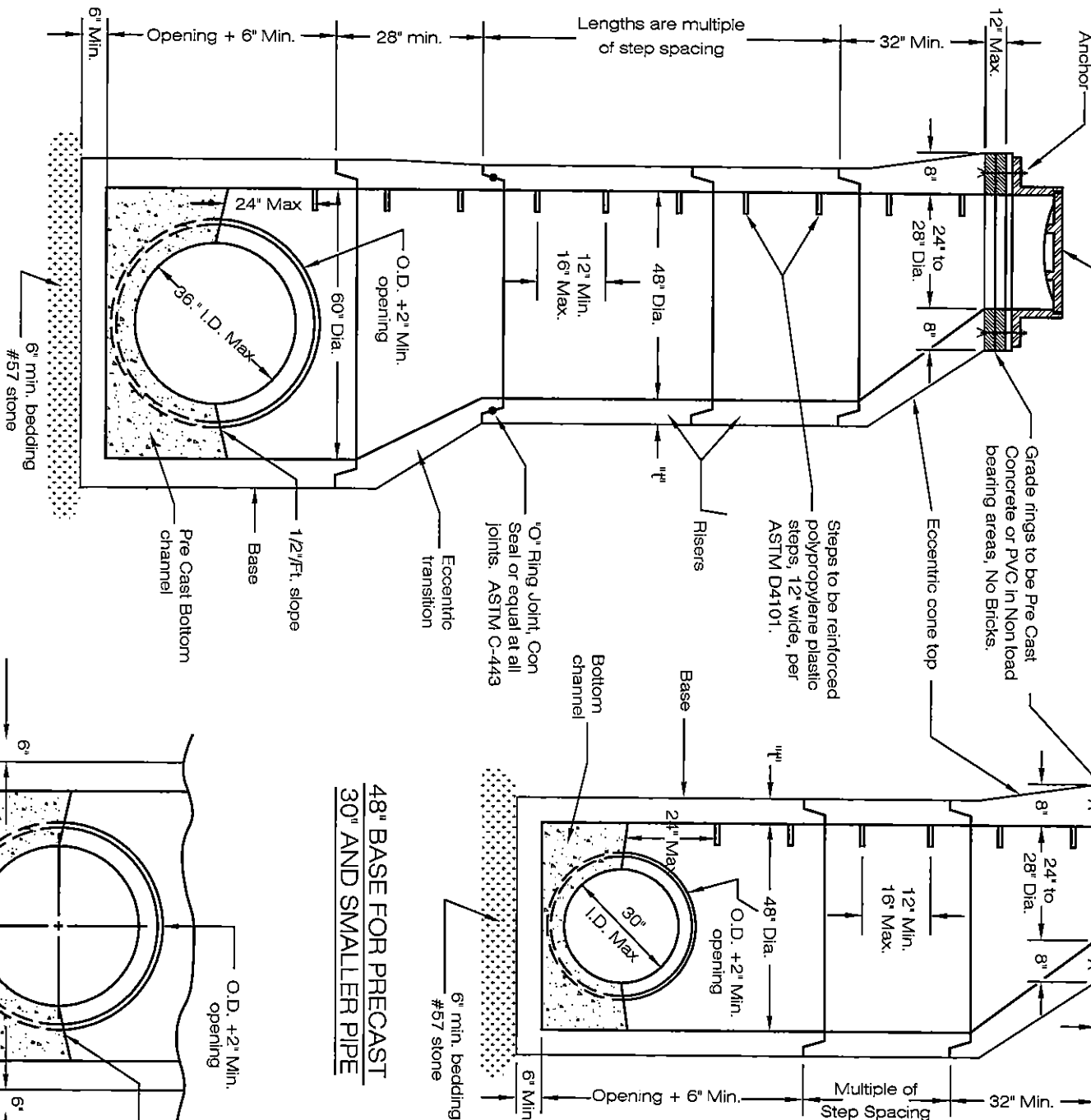
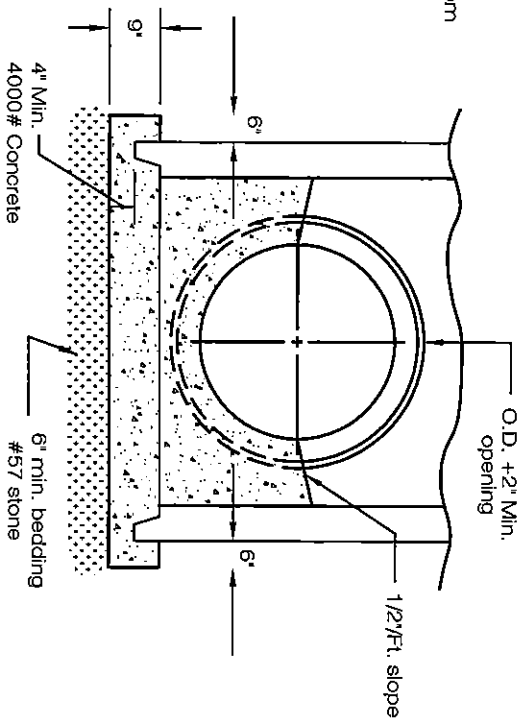


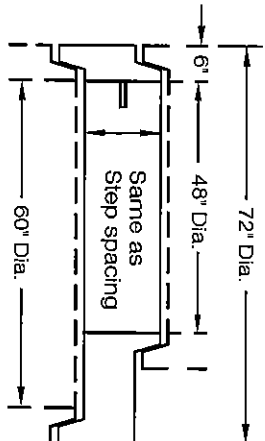
Frame and cover as specified  
East Jordan No. 1045,  
NEENAH R-1643 or equal.  
Cover shall be labeled **STORM**.



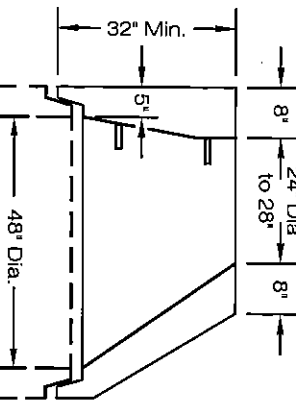
48" BASE FOR PRECAST  
30" AND SMALLER PIPE



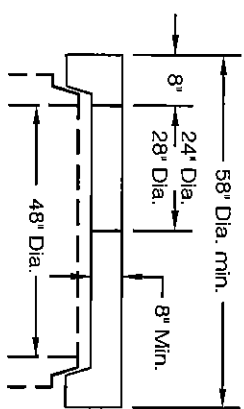
DOGHOUSE CONSTRUCTION



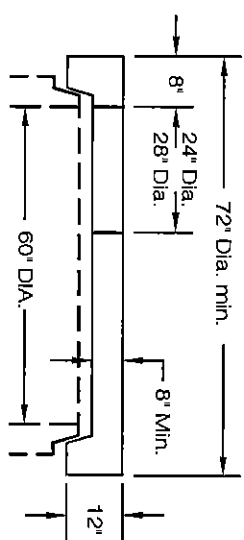
FLAT SLAB  
TRANSITION



ECCENTRIC CONE TOP



FLAT SLAB TOP



FLAT SLAB TOP

## NOTES

Sections of the precast manhole shall be cast and assembled with either all tongue or all groove ends up. Lift holes may be provided in each section for handling.

**TOP AND TRANSITION** (or reducer) Sections may be either eccentric cone, or flat slab.

**BASES** for manholes are shown with monolithic floor and riser which may be cast in one or two operations. A permissible alternate is to cast and ship the floor and barrel separately. Openings for inlet and outlet pipe shall be provided, either when the unit is cast or later, to meet project requirements. Bottom channels may be formed of concrete precast in the base or by field construction. Bases may also be poured in place. All inlets and outlets are to be identified.

**OPENINGS IN RISER SECTIONS** for 18" and smaller inlet pipes shall be prefabricated.

**MATERIALS** for bases and other precast sections, including reinforcement not specified hereon, shall comply with the specifications.

**LANDING PLATFORMS** as shown on the Landing Details shall be installed in manholes that are over 28 feet deep to the invert with maximum vertical spacing of 20 feet.

**PRECAST MANHOLE** shall conform to the requirements of ASTM C-478. Concrete shall be 4000# P.S.I.

**SEAL** lift holes with approved concrete plugs and bit.

**ANCHORS** 1/2" dia. Allthread with washers and hex nut (Min 4). Lead anchor secured into the eccentric cone top.

**CASTINGS** for manholes shall be cleaned and painted in field with one coat of asphalt varnish or coal tar pitch paint.

48" - 96" BASE FOR PRECAST		
Base I.D.	Min "t"	Max. Pipe Size
48"	5"	30"
60"	5"	36"
72"	6"	48"
84"	7"	54"
90"	7-1/2"	60"
96"	8"	60"

*David J. Smith*  
CITY OF NORTH RIDGEVILLE, ENGINEER

REV No	DATE	BY	DESCRIPTION
1	12/09	CB	MANHOLE STEP SPECIFICATION
CITY OF NORTH RIDGEVILLE, OHIO DEPARTMENT OF ENGINEERING			
PRECAST CONCRETE MANHOLE			
SCALE: NOT TO SCALE			STM-1
DATE: 10/01/08			DRWN BY: JAB/TEB