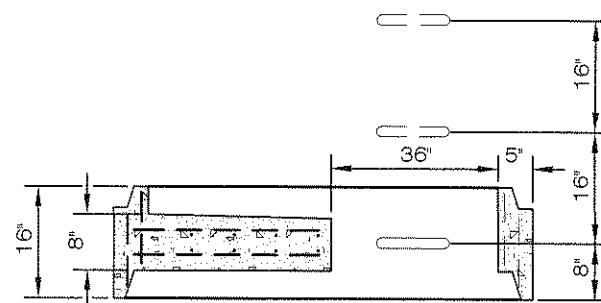
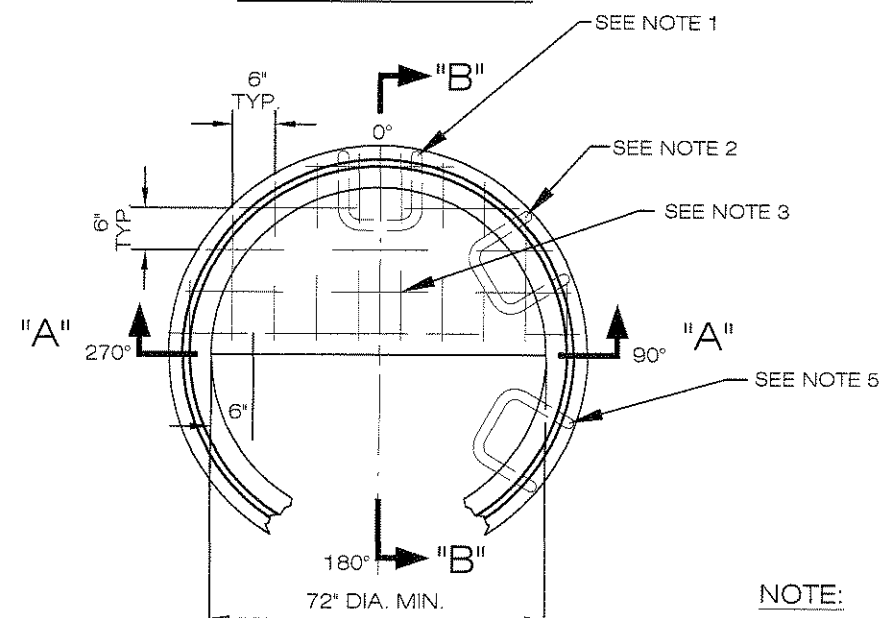


SECTION "A-A"



SECTION "B-B"



PLAN VIEW

NOTES:

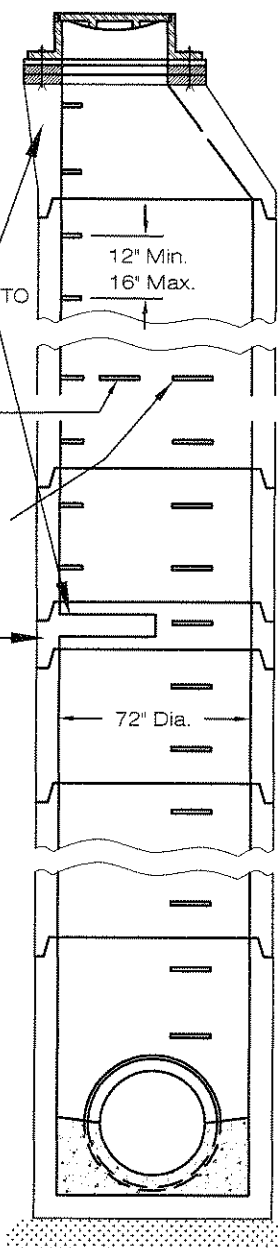
1. MANHOLE STEPS START 12" TO 16" ABOVE LANDING PLATFORM FLOOR AND CONTINUE VERTICALLY ABOVE TO THE NEXT LANDING PLATFORM OR TOP OUTLET. STEPS SHALL BE REINFORCED POLYPROPYLENE 12" WIDE PER ASTM 2146-68.
2. 1-1/2" DIA SOLID STEEL BAR GRAB RAIL 5'-0" ABOVE PLATFORM.
3. TYPICAL BAR PLACEMENT IN LANDING RISER-#4 REBAR.
4. IF MULTIPLE LANDINGS ARE REQUIRED, ROTATE ADJACENT LANDINGS 90 DEGREES. A 90 DEGREE CLEAR OPENING MUST BE SEEN FROM TOP TO BOTTOM OF MANHOLE.

MANHOLE STEPS (AT 0°, (TOP OF MANHOLE TO LANDING)

GRAB RAIL 5' ABOVE LANDING (AT 60°)

MANHOLE STEPS 5' ABOVE LANDING TO BOTTOM OF MANHOLE (AT 120°)

LANDING SECTION AT 1/2 MANHOLE DEPTH, 20' MAX.



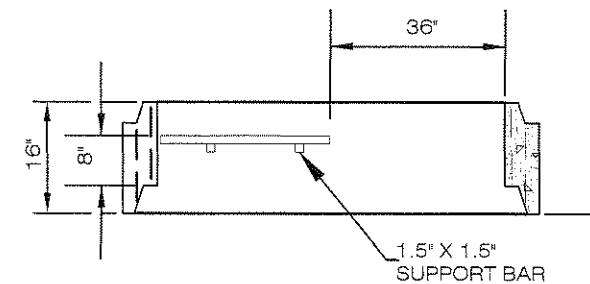
MANHOLE SECTION

NOTE:

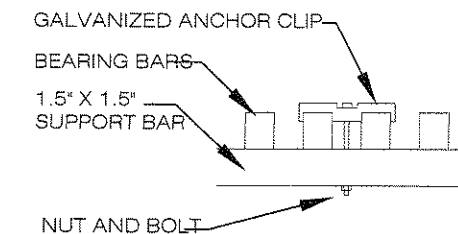
LANDING PLATFORMS AS SHOWN ON THE LANDING DETAILS SHALL BE INSTALLED IN MANHOLES THAT ARE OVER TWENTY-EIGHT (28) FEET DEEP TO THE INVERT WITH A MAXIMUM VERTICAL SPACING OF TWENTY (20) FEET.

REV No.	DATE	BY	DESCRIPTION
CITY OF NORTH RIDGEVILLE, OHIO DEPARTMENT OF ENGINEERING			
LANDING PLATFORM			
SCALE: NOT TO SCALE			SAN-3
DATE: 10/01/08	DRWN BY: JAB/TEB		

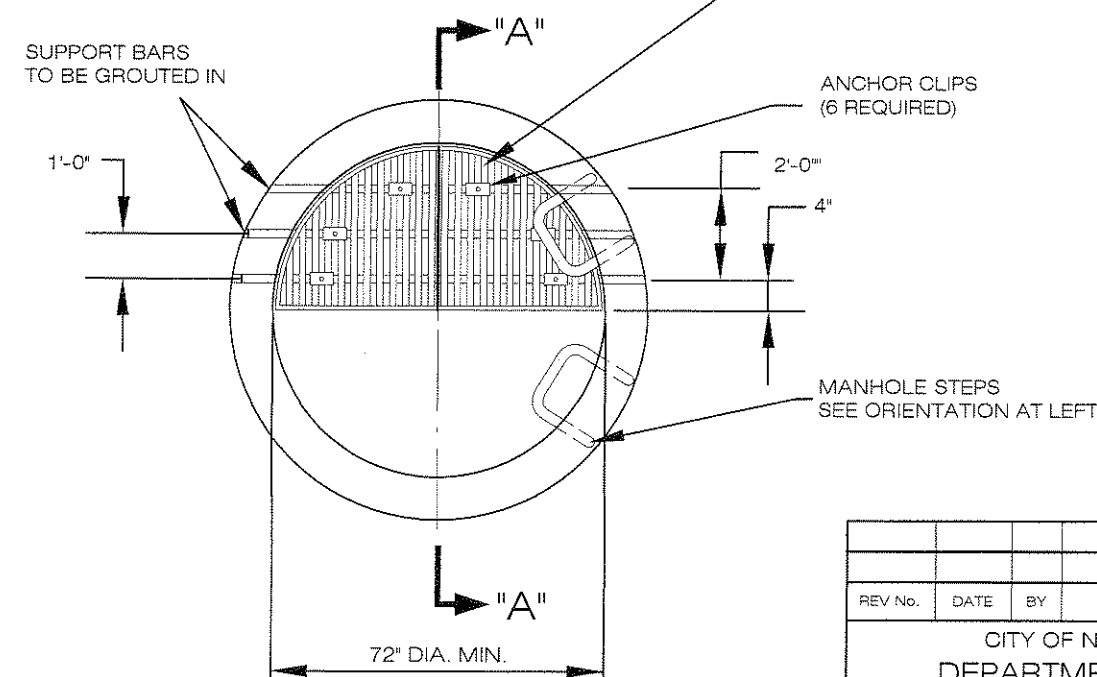
Larry Suffrich
CITY OF NORTH RIDGEVILLE, ENGINEER



SECTION "A-A"



ANCHOR CLIP DETAIL



PLAN VIEW

REMOVABLE ALUMINUM GRATING
McNICHOLS GAL 125, 3/16" X 1-1/4"
BEARING BARS, OR APPROVED
EQUAL.

ANCHOR CLIPS
(6 REQUIRED)

MANHOLE STEPS
SEE ORIENTATION AT LEFT

REV No.	DATE	BY	DESCRIPTION
CITY OF NORTH RIDGEVILLE, OHIO DEPARTMENT OF ENGINEERING			
ALTERNATE LANDING PLATFORM			
SCALE: NOT TO SCALE			SAN-4
DATE: 10/01/08	DRWN BY: JAB/TEB		

Larry Suffrich
CITY OF NORTH RIDGEVILLE, ENGINEER