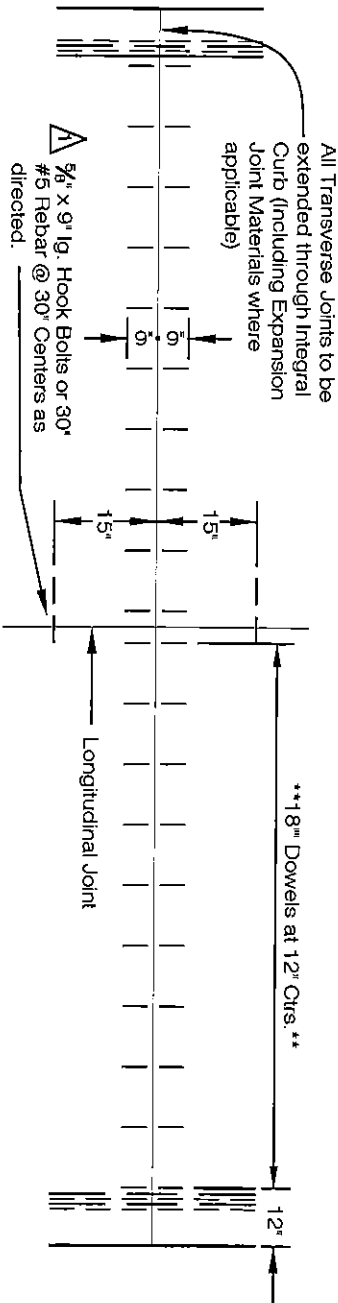


SCHEDULE OF DIMENSIONS			
	INDUSTRIAL	RESIDENTIAL	
A	50.00'	50.00'	
B	50.00' MIN.	50.00' MIN.	
C	55.00'	35.00'	

- JOINT LEGEND**
- C Control Joint
 - E Expansion Joint (Sleeper Slab)
 - LK Longitudinal Key Joint
 - T Thickened Edge
 - P Pressure Relief Joint
 - S Sleeper Slab Expansion Joint
- Use Longitudinal Key Joints, without hook bolts around all manholes.
- All catch basins and manholes shall be separated from the pavement and curb by Boxing Out.

TYPICAL JOINT LAYOUT FOR CONCRETE CUL-DE-SAC & INTERSECTION PAVEMENT

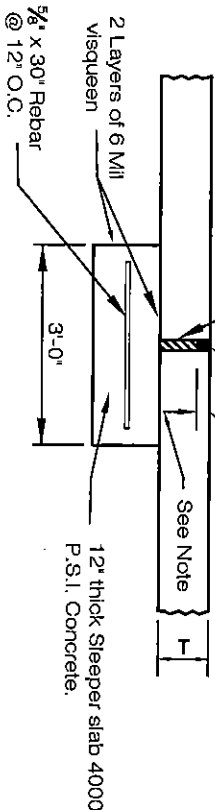


TYPICAL SECTION OF PAVEMENT

2" Preformed expansion joint filler as approved by the Engineer. Filler shall be one continuous piece along its entire length.

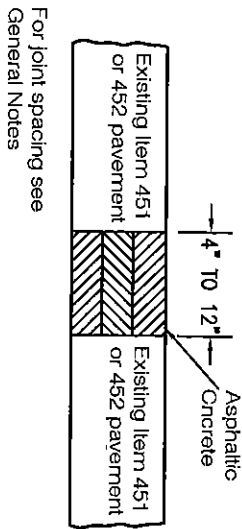
Note: Trowel finish surface of sleeper slab to be smooth.

O.D.O.T. Item 705.04 joint sealer.

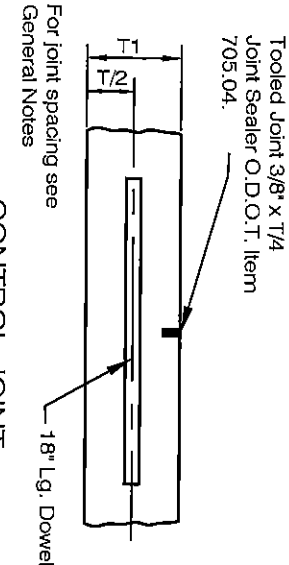


Expansion joints shall be used at all intersections and at a maximum of every 200' and where designated on the plans by the Engineer.

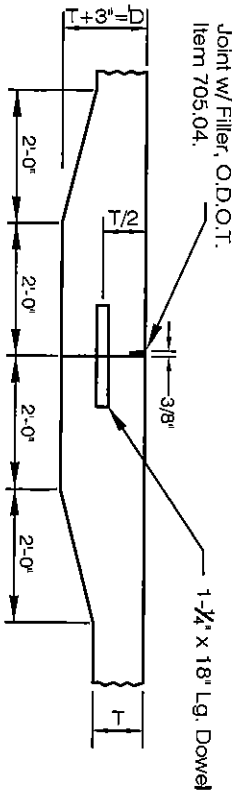
EXPANSION JOINT (SLEEPER SLAB)



PRESSURE RELIEF JOINT



CONTROL JOINT

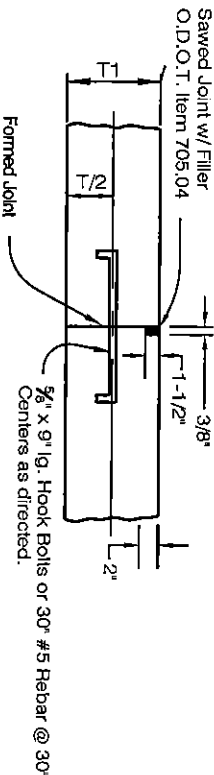


TK - THICKENED EDGE JOINT

To be used at all intersections and at all points where new pavement abuts existing pavement. Dowel bar not required when abutting full depth asphalt roadways.

- GENERAL NOTES:**
- All material and workmanship shall conform to the latest local & Ohio Department of Transportation Construction and Material Specifications.
 - Opening of pavement to traffic to be determined by a 600 P.S.I. beam test (job site curing) or 4000 P.S.I. cylinder test (28 days).
 - One core or cylinder to be taken for each 500 S.Y. of pavement.
 - All work to be performed under full time inspection by local representative.
 - All dowels, hook bolts or rebar are to be epoxy coated.
 - Transverse Joint Spacing
 - 7" Item 452 Concrete Pavement - 14 Lin. Ft. (Maximum)
 - 9" Item 452 Concrete Pavement - 16 Lin. Ft. (Maximum)
 - Pressure Relief Joint
 - Pressure relief joints are to be placed at the location directed by the City Engineer. The pressure relief joint shall have an underdrain installed according to applicable ODOT stand Drawings.

LONGITUDINAL KEY JOINT



Note: **

RESIDENTIAL PAVEMENT T = 8" (1" Dia. Dowel)

INDUSTRIAL PAVEMENT T = 9" (1 1/4" Dia. Dowel)

CONCRETE PAVEMENT STANDARDS

REV No.	DATE	BY	DESCRIPTION
2	7-13-10	CB	EXPANSION JOINT SPACING

CITY OF NORTH RIDGEVILLE, OHIO
DEPARTMENT OF ENGINEERING

CONCRETE PAVEMENT STANDARDS

SCALE: NOT TO SCALE

DATE: 10/01/08

PAV-4