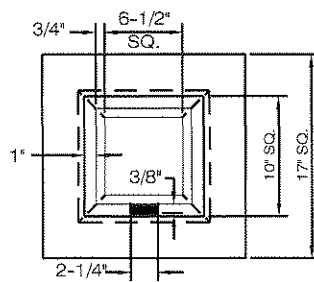
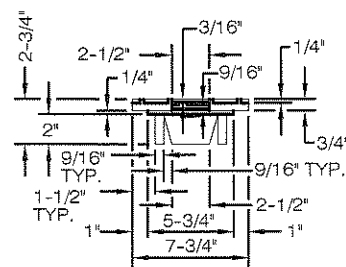


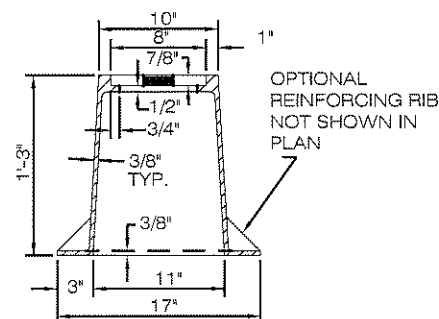
PLAN OF COVER



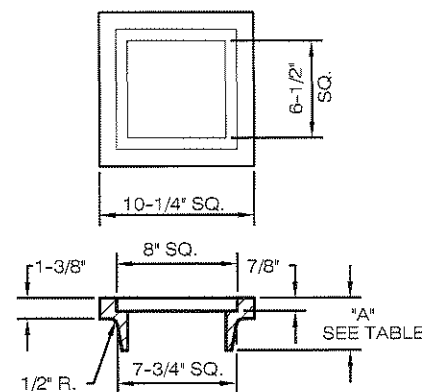
PLAN OF FRAME



SIDE VIEW OF COVER

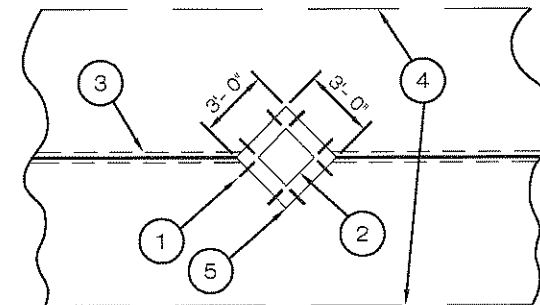


SECTION OF FRAME



ADJUSTING RING

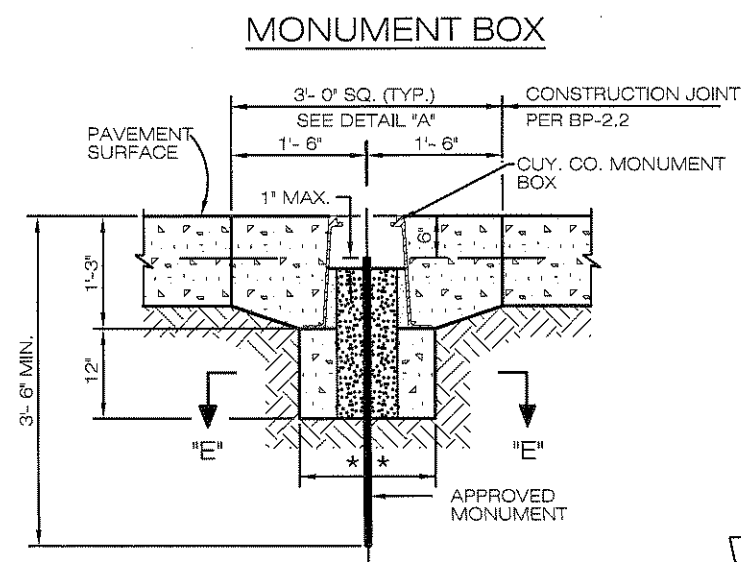
ADJUSTMENT HEIGHT	DIMENSION "A"	MINIMUM WEIGHTS
1-1/2"	2-3/8"	20-LBS.
2-1/2"	3-3/8"	27-LBS.
3"	3-7/8"	30-LBS.
3-1/2"	4-3/8"	32-LBS.



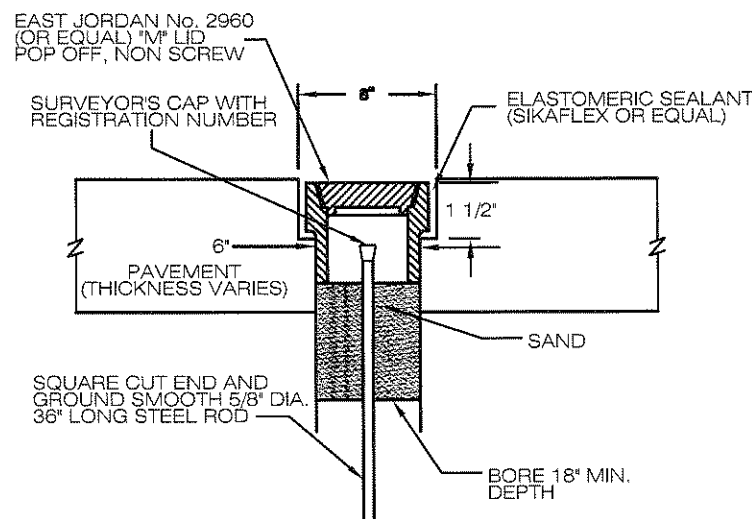
- ① MONUMENT ASSEMBLY BLOCK OUT (3/4" DOWEL RODS 2' O.C.)
- ② MONUMENT BOX
- ③ TYPICAL LONGITUDINAL JOINT
- ④ 451 CONC. PAVEMENTS, A.P.P.
- ⑤ 1/4" x 1" GROOVE W/ JOINT FILLER

DETAIL "A"

TYPICAL BLOCK OUT IN RIGID PAVEMENT. (OMIT FOR FULL DEPTH FLEXIBLE PAVEMENT)

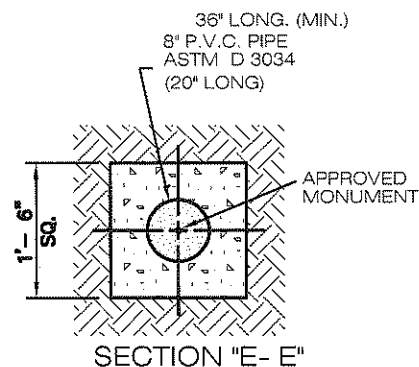


MONUMENT BOX

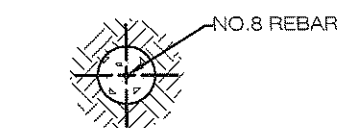
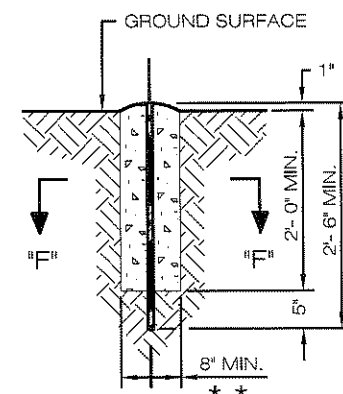


- INSTALLATION INSTRUCTIONS
- PAVEMENT CORE DRILLED WITH 6" DIAMETER CORE, DRILLED THRU PAVEMENT THICKNESS (AT A MIN. OF 18").
 - 8" CORE, 1 1/2" DEEP TO SEAT 1/4" BELOW PAVEMENT.
 - USE ELASTOMERIC SEALANT (SIKAFLEX OR EQUAL) TO FILL JOINT BETWEEN BOX AND PAVEMENT.

ALTERNATE
CORED ROADWAY
MONUMENT ASSEMBLY



ROADWAY MONUMENT ASSEMBLY



SECTION "F- F"
RIGHT OF WAY MONUMENT

NOTES

CASTINGS

SHALL MINIMALLY MEET THE REQUIRE- MENTS OF 604.02-711.12, A.S.T.M. A 48, CLASS 35 GRAY IRON OR 711.13 DUCTILE IRON.

THE ASSEMBLY SHALL BE ESSENTIALLY THE SAME AND EQUALLY AS STRONG AS THOSE HEREON.

MINIMUM WEIGHTS:

FRAME _____ 94 LBS.
COVER _____ 16 LBS.

PROVIDED THEY COMPLY WITH THE SPECIFICATIONS, DETAILS, DIMENSIONS AND MINIMUM WEIGHTS,
NEENAH _____ NO.NF- 0000T04,
EAST JORDAN _____ NO.8365 OR APPROVED
EQUAL CASTINGS ARE ACCEPTABLE.

BEARING AREAS SHALL BE FINISHED AS TO PROVIDE A FIRM AND EVEN SEAT, NO PROJECTION SHALL EXIST ON THE BEARING AREAS AND THE COVER SHALL SEAT IN ITS FRAME WITHOUT ROCKING.

PRIOR TO CONSTRUCTION OF PAVEMENT, THE FRAME SHALL BE SET TO GRADE IN SUCH A MANNER THAT WILL PREVENT ANY PAVEMENT MATERIAL FROM ENTERING THE CASTING.

MONUMENT CAPS WILL BE FURNISHED BY THE CLEVELAND REGIONAL GEODETIC SURVEY (C.R.G.S.) OFFICE. CONTACT CUYAHOGA COUNTY ENGINEER'S SURVEY OFFICE TWO (2) WORKING DAYS BEFORE CONSTRUCTING.

ALL MONUMENTS ARE TO BE SET AND CAPPED UNDER THE DIRECTION OF A REGISTERED SURVEYOR. (REF. O.A.C. 4733-37-03)

LEGEND

- ITEM 499- CONCRETE, CLASS "C"
- SAND, ITEM 703.02- COMPACTED AS REQUIRED

** UNDISTURBED BEARING AND/OR SUITABLY FIRM FOUNDATION PROVIDED IN ACCORDANCE WITH 604.04 AND TO THE SATISFACTION OF THE ENGINEER.

REV No.	DATE	BY	DESCRIPTION
CITY OF NORTH RIDGEVILLE, OHIO DEPARTMENT OF ENGINEERING			
MONUMENT BOX ASSEMBLIES			
SCALE: NOT TO SCALE			PAV-2
DATE: 10/01/08	DRWN BY: JAB/TEB		

Lawrence J. Liffich
CITY OF NORTH RIDGEVILLE, ENGINEER