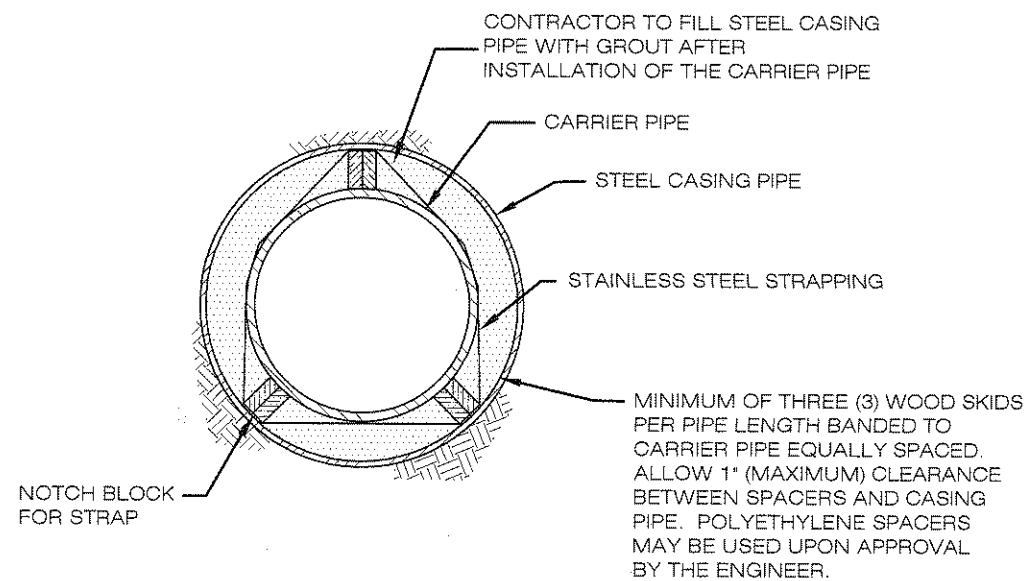
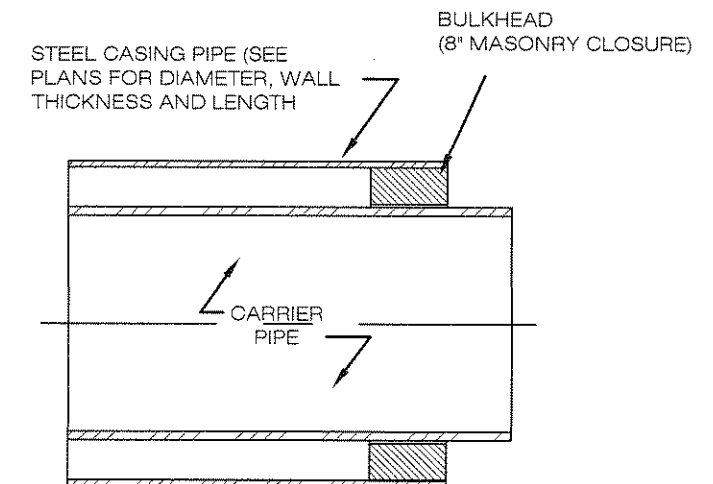


PIPE SKID DETAIL



SECTION "A - A"



CASING PIPE CLOSURE DETAIL

NOTE

1. WELD ALL ENCASEMENT PIPE JOINTS.
2. MINIMUM THICKNESS FOR NEW CASING PIPE IS 3/8". MINIMUM THICKNESS FOR USED CASING PIPE IS 1/2". *1/2" IS MIN. FOR R.R. BORES.
3. CASING DIAMETER SHALL BE A MINIMUM OF 6" GREATER THAN THE LARGEST O.D. OF THE CARRIER PIPE.
4. PROVIDE A 3/4" COPPER DRAIN PIPE AT THE BOTTOM OF THE DOWNSTREAM BULKHEAD.

CARRIER PIPE	STEEL CASING PIPE		
DIA.	DIA.	THICK.	FILL TYPE
3"	10"	3/8"	GROUT
6"	16"	3/8"	GROUT
8"	18"	3/8"	GROUT
10"	22"	3/8"	GROUT
12"	24"	1/2"	GROUT
16"	28"	1/2"	GROUT
18"	30"	1/2"	GROUT
24"	36"	5/8"	GROUT

Larry Puffik

CITY OF NORTH RIDGEVILLE, ENGINEER

REV No.	DATE	BY	DESCRIPTION
CITY OF NORTH RIDGEVILLE, OHIO DEPARTMENT OF ENGINEERING			
BORING DETAIL			
SCALE: NOT TO SCALE			MIS-2
DATE: 10/01/08	DRWN BY: JAB/TEB		